

# HYGIEMAG – Magnetic Non Contact – Type SMR



Magnetic Actuation - Power series 230V.ac 1.0A. / 24V.dc 1.0A. IP69K

Switching Tolerance up to 14mm Temperatures up to 105C. Stainless Steel 316 housing

Specifically designed for Food Processing applications – Stainless Steel 316 Mirror finish.

Suitable for CIP cleaning

Universal housing - 22mm fixing hole centre - 50mm wide body

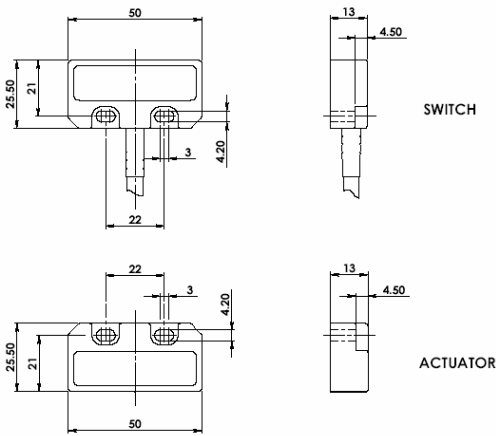
Can be high pressure hosed at high temperature – IP69K.

Wide 14mm sensing high tolerance to misalignment

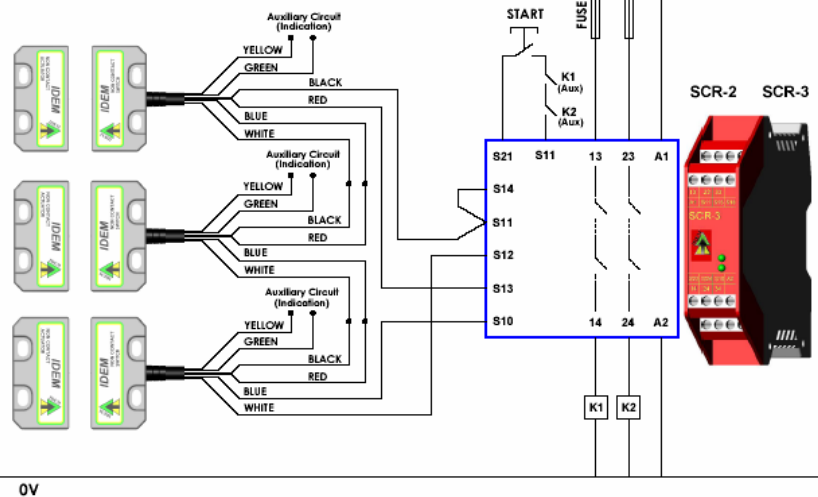
High switching capability – up to 1A.



## Application example – magnetic switches



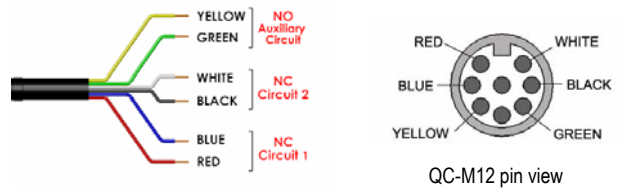
24Vac/dc 110Vac 230Vac



0V

One switch connected to an SCR-2 or SCR-3 to give Single Channel Guard monitoring but with monitored manual start and contactor feedback check. Allows minimal wiring but higher current switching to K1 and K2 contactors.

Standards	EN1088 IEC 947-5-3 EN 60204-1 ISO 13849-1 EN 954-1 UL508
Safety Classification and Reliability Data:	
Mechanical Reliability B10d	> 3.3 x 10 <sup>6</sup> operations at 100mA load up to Category 4 with Safety Relay
EN 954-1	up to PLe depending upon system architecture
ISO 13849-1	up to SIL3 depending upon system architecture
EN 62061	8 cycles per hour / 24 hours per day / 365 days
Safety Data - Annual Usage	> 2.52 x 10 <sup>-8</sup>
PFHd	47 years
Proof Test Interval (Life)	470 years
MTTFd	470 years
Heavy Duty Safety Channel 1 NC	Voltage free : 250V.ac 2.0 A Max. Rating
Safety Channel 2 NC	Voltage free : 250V.ac 2.0 A Max. Rating
Safety Channel 3 NO	Voltage free : 24V.dc 0.2 A Max. Rating
Fuse	Internal 2.0 A. (F) External 1.6A (F) (User)
Medium Duty Safety Channel 1 NC	Voltage free : 250V.ac 1.0 A Max. Rating
Safety Channel 2 NC	Voltage free : 250V.ac 1.0 A Max. Rating
Safety Channel 3 NO	Voltage free : 24V.dc 0.2 A Max. Rating
Fuse	Internal 1.0 A. (F) External 0.8A (F) (User)
Contact release time	<2ms
Initial contact resistance	<500 milliohm
Minimum switched current	10V. dc 1mA
Dielectric withstand	250V.ac
Insulation Resistance	100 Mohms
Recommended setting gap	5mm
Switching Distance:	Sao 12mm Close
(Target to target)	Sar 22mm Open
Tolerance to misalignment	5mm in any direction from 5mm setting gap
Switching frequency	1.0 Hz maximum
Approach speed	200mm/m. to 1000mm/s.
Body Material	Stainless Steel 316 Mirror finish
Temperature Range	-25 / 105C.
Enclosure Protection	IP69K IP67
Shock Resistance	IEC 68-2-27 11ms 30g
Vibration Resistance	IEC 68-2-6 10-55 Hz. 1mm
Cable Type	PVC 6 or 8 core 6mm O.D.
Mounting Bolts	2 x M4 Tightening torque 1.0 Nm
Mounting Position	Any



Sales Number	Type	Cable Length	Circuits
139009	Hygiemag SMR	2M	2NC
139010	Hygiemag SMR	5M	2NC
139011	Hygiemag SMR	10M	2NC
139012	Hygiemag SMR	QC-M12	2NC
139013	Hygiemag SMR	2M	2NC 1NO
139014	Hygiemag SMR	5M	2NC 1NO
139015	Hygiemag SMR	10M	2NC 1NO
139016	Hygiemag SMR	QC-M12	2NC 1NO
139017	Hygiemag SMR	2M	1NC
139018	Hygiemag SMR	5M	1NC
139019	Hygiemag SMR	10M	1NC
139020	Hygiemag SMR	QC-M12	1NC
139021	Hygiemag SMR	2M	1NC 1NO
139022	Hygiemag SMR	5M	1NC 1NO
139023	Hygiemag SMR	10M	1NC 1NO
139024	Hygiemag SMR	QC-M12	1NC 1NO