

Stainless Steel Tongue Switch with Guard locking – Type HYGIELOCK KL3-SS



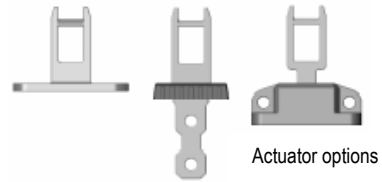
'Hygielock' KL3-SS

Guard locking up to 3000N.

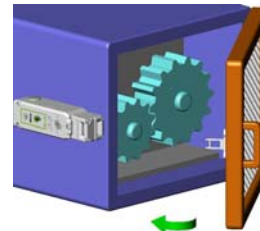
New



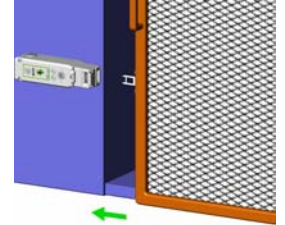
Standard Flat Fully Flexible



Actuator options



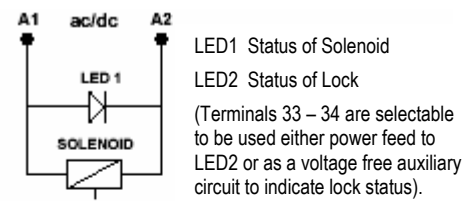
Hinged Guard



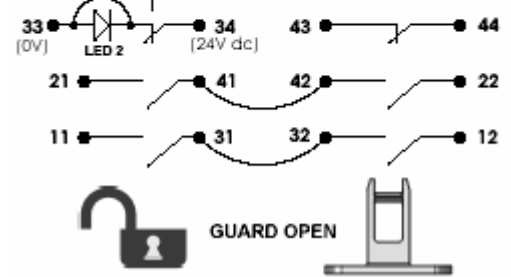
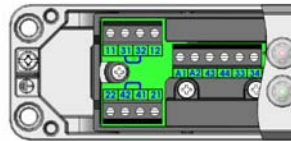
Sliding Guard

Features:

- Stainless Steel Housing 316 – Mirror finish
- Food Industry compatible – IP69K can be high pressure hosed
- 2 positively guided contact blocks for independent monitoring of the actuator and the solenoid
- Provides Guard holding up to 3000N. (300Kg.)
- Solenoid operated release – choice of 24V, 110V, or 230V. ac/dc
- 2 diagnostic LED's LED1 Status of solenoid LED2 Status of Lock
- 3 Conduit entries M20 or 1/2" NPT or quick connect versions
- Industry fitting 40mm wide 176mm long 30mm fixing
- 4NC Safety circuits – 2 Solenoid 2 Actuator
- 1NO Auxiliary circuit – Actuator status
- 1NO Auxiliary circuit – Lock status (selectable circuit)



Spring to lock when actuator is inserted. Energise solenoid to unlock.

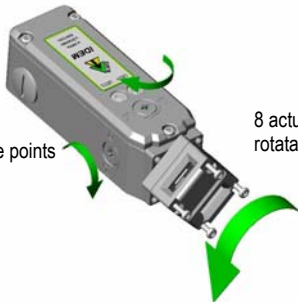


Standards EN1088 IEC 947-5-1 EN 60204-1 ISO 13849-1 EN 954-1 UL508

Safety Classification and Reliability Data:

- Mechanical Reliability B10d > 2.5 x 10⁶ operations at 100mA load up to Category 4 with Safety Relay
- EN 954-1 up to PLE depending upon system architecture
- ISO 13849-1 up to SIL3 depending upon system architecture
- EN 62061 8 cycles per hour / 24 hours per day / 365 days
- Safety Data - Annual Usage PFHd > 3.44 x 10⁻⁸
- Proof Test Interval (Life) 35 years
- MTTFd 356 years
- Solenoid Voltage (by part number) 24V ac/dc or 110V. ac or 230V. ac
- LED 2 Supply Voltage 24V dc
- Utilization Category AC15 A300 3A.
- Thermal Current (Ith) 5A
- Rated Insulation Voltage / Rated Impulse Withstand Voltage 600VAC / 2500 VAC
- Travel for Positive Opening 10mm
- Actuator entry minimum radius 175mm Standard 60mm Heavy Duty
- Materials Stainless Steel 316
- Enclosure Protection IP69K IP67
- Operating Temperature -25C. 60C. (100 C. Cleaning)
- Vibration IEC 68-2-6, 10-55Hz+1Hz, Excursion: 0.35mm, 1 octave/min
- Conduit Entry Various (See Sales Part Numbers)
- Fixing 4 x M5

Top or Side Manual release points

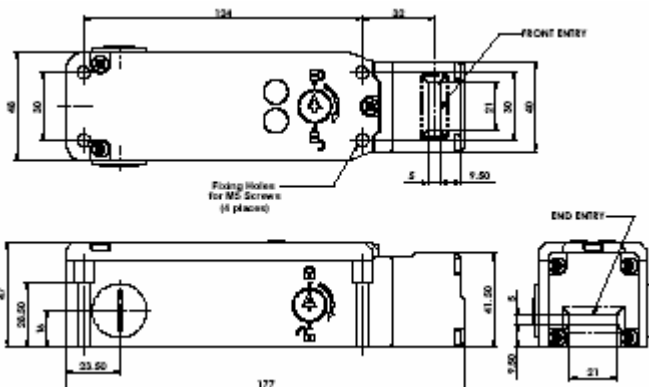


8 actuator entry positions rotatable head

Actuator insertion

7.8 6.5 0 mm

11/12	Open	
21/22	Open	
33/34	Open	
43/44		Open



Sales Number				
	Solenoid Voltage	M20	1/2" NPT	QC
Kobra KL3-SS Switch	24V. ac/dc	205001	205002	205003
Kobra KL3-SS Switch	110V. ac	205004	205005	205006
Kobra KL3-SS Switch	230V. ac	205007	205008	205009
Kobra Actuator	Standard	Add A to Sales Part Number		
Kobra Actuator	Flat	Add F to Sales Part Number		
Kobra Actuator	Heavy Duty Flexible	Add HF to Sales Part Number		

Ordering Example: Kobra KL3-SS M20 230V. Solenoid with Heavy Duty Flexible Actuator Part No. 205007-F