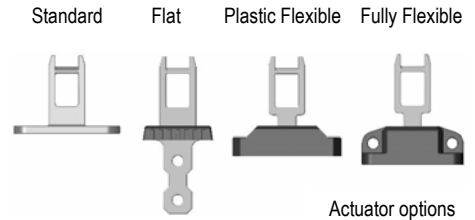


Kobra Stainless Steel Tongue Switch – Type HYGIECAM KM-SS



'Hygiecam' KM-SS

New



Actuator options

The switch head can be rotated through 180 degrees to provide ease of mounting and offer 8 different actuator entry positions

Features:

Stainless Steel Housing 316 – Mirror finish

Food Industry compatible – IP69K

Conduit entry M20 or 1/2" NPT

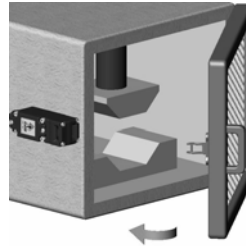
IP67 enclosure protection

3 or 4 pole contact blocks

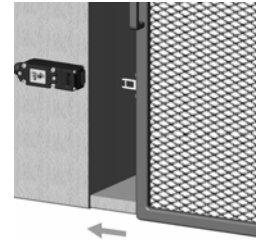
DIN Standard Industry fitting 40mm wide 118mm long 30mm fixing



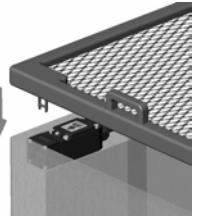
Explosion Proof Versions



Hinged Guard

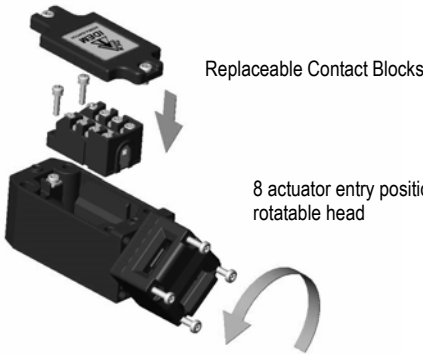
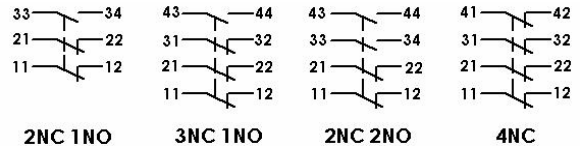


Sliding Guard



Lift off Guard

Contact blocks provide positively operated safety contacts to IEC 947-5-1 with optional Explosion proof versions.



Replaceable Contact Blocks

8 actuator entry positions rotatable head

Contact operation at withdrawal of actuator

2NC 1NO	7.8	7.0	0 mm	3NC (1NO)	7.8	7.0	0 mm
11/12	Open			11/12	Open		
21/22	Open			21/22	Open		
33/34			Open	31/32	Open		
				43/44			Open

4NC	7.0	0 mm	2NC 2NO	6.4	7.0	0 mm
11/12	Open		11/12	Open		
21/22	Open		21/22	Open		
31/32	Open		33/34			Open
41/42	Open		43/44			Open

Standards EN1088 IEC 947-5-1 EN 60204-1
ISO 13849-1 EN 954-1 UL508

Safety Classification and Reliability Data:

Mechanical Reliability B10d > 2.5 x 10⁶ operations at 100mA load
EN 954-1 up to Category 4 with Safety Relay
ISO 13849-1 up to PLe depending upon system architecture
EN 62061 up to SIL3 depending upon system architecture

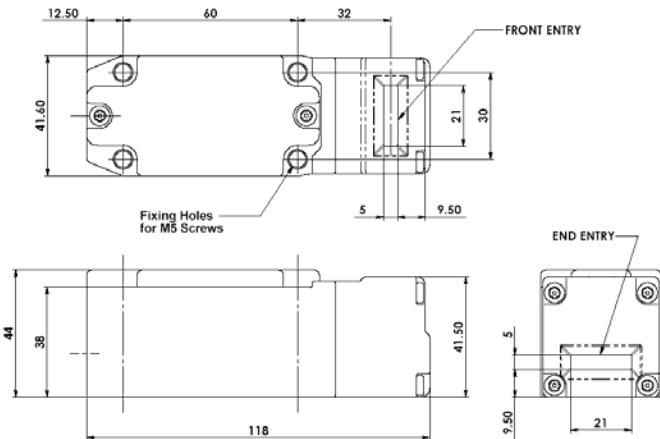
Safety Data - Annual Usage 8 cycles per hour / 24 hours per day / 365 days
PFHd > 3.44 x 10⁻⁸

Proof Test Interval (Life) 35 years
MTTFd 356 years

Solenoid Voltage (by part number) 24V ac/dc or 110V. ac or 230V. ac
LED 2 Supply Voltage 24V dc
Utilization Category AC15 A300 3A.
Thermal Current (Ith) 10A

Rated Insulation Voltage / Rated Impulse Withstand Voltage 600VAC / 2500 VAC
Travel for Positive Opening 8mm
Actuator entry minimum radius 175mm Standard 60mm Heavy Duty

Materials Stainless Steel 316
Enclosure Protection IP69K IP67
Operating Temperature -25C. 80C. (100 C. Cleaning)
IEC 68-2-6, 10-55Hz+1Hz,
Excursion: 0.35mm, 1 octave/min
Vibration
Conduit Entry Various (See Sales Part Numbers)
Fixing 4 x M5



Sales Number				
	Contacts	M20	1/2" NPT	QC
Kobra KM-SS Switch	2NC 1NO	204001	204002	204003
Kobra KM-SS Switch	3NC 1NO	204004	204005	204006
Kobra KM-SS Switch	2NC 2NO	204007	204008	204009
Kobra KM-SS Switch	4NC	204010	204011	204012
Kobra KM-SS Switch	1NC 1NO EX	204016	3m. 4 core Ex	
Kobra KM-SS Switch	2NC EX	204019	3m. 4 core Ex	
Kobra Actuator	Standard	Add A to Sales Part Number		
Kobra Actuator	Flat	Add F to Sales Part Number		
Kobra Actuator	Plastic Flexible	Add PF to Sales Part Number		
Kobra Actuator	Heavy Duty Flexible	Add HF to Sales Part Number		

Ordering Example: Kobra KM-SS 1/2" NPT 2NC 2NO with Heavy Flexible Actuator Part No. 204008-HF